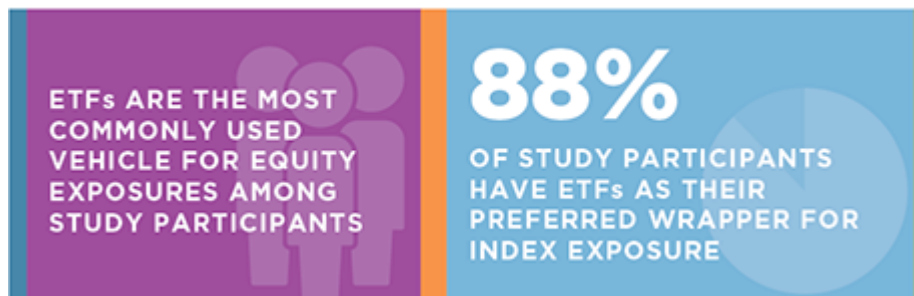


ETFs: Instruments of Choice for Latin American Portfolios

International Diversification and Tactical Adjustments Are Main Applications

March 20, 2019

Executive Summary:



Allocations to exchange-traded funds by institutions currently investing in ETFs increased to 18% of total assets in 2018, up from 13% in 2017, among the 50 institutional ETF investors participating in the most recent Latin American Exchange-Traded Funds Study from Greenwich Associates. That growth was driven by several influential trends, including:

- **Shift to a risk-management focus:** As they reposition portfolios for what they see as mounting market and geopolitical risk, Latin American institutions are increasing their use of ETFs, which are proving highly versatile tools for implementing specific changes.
- **Indexation:** Like their counterparts in the United States, Europe and Asia, Latin American institutions continue to move assets from active management to index strategies. With 88% of study participants naming ETFs as their preferred wrapper for index exposures, this transition of portfolio assets remains one of the biggest and most consistent sources of ETF demand.
- **Strategic Exposures:** Even as they stepped up their use of ETFs in tactical portfolio adjustments related to volatility and other market conditions, Latin American institutions continued adopting ETFs for strategic purposes such as obtaining fixed-income exposures, international diversification and tax efficiency—with the last achieved through the use of European UCITS.
- **Appetite for Smart Beta:** ETFs have also emerged as institutions' vehicle of choice for smart beta strategies. Sustained appetite for factor-based approaches could actually accelerate demand for ETFs in 2019. More than 60% of current investors in smart beta ETFs plan to increase allocations to the funds in the coming year.

As these and other developments make ETFs more mainstream components of institutional portfolios, Latin American institutions are applying the funds to a growing list of applications across asset classes. This proliferation of uses is fueling fast expansion—especially in equity portfolios, where half of current ETF investors are planning to expand allocations in 2019, with many of these institutions anticipating increases in

excess of 10%.

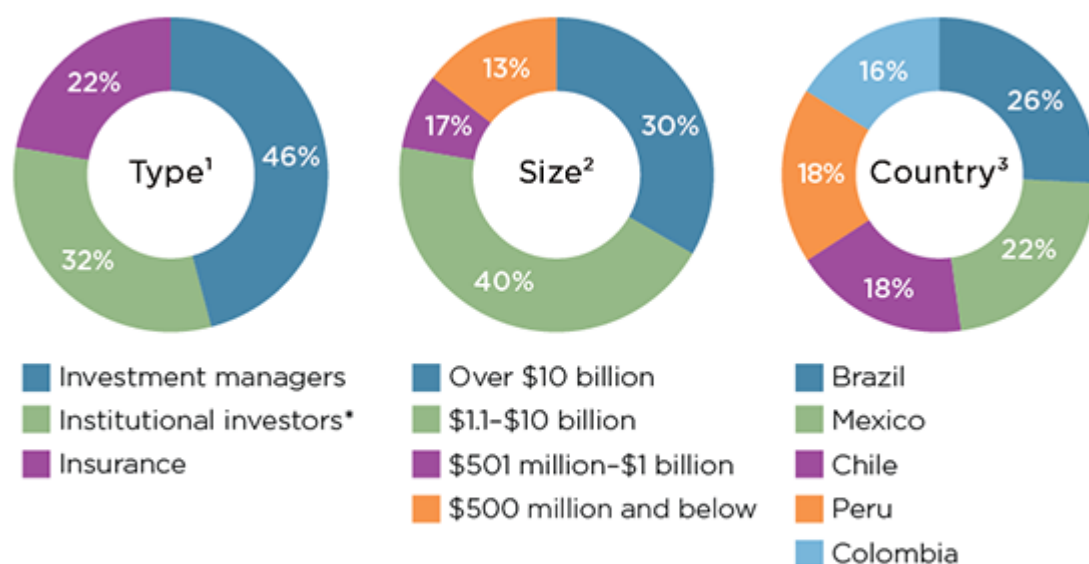
Methodology:

Between October and December 2018, Greenwich Associates interviewed 50 institutional investors for its third annual edition of the Latin American Exchange-Traded Funds Study. The research universe included 23 asset managers, 16 institutional funds and 11 insurance companies/insurance company asset managers.

Most of the participants are large institutions. Almost 45% of the institutions in the study have assets under management (AUM) of more than \$5 billion, and more than 70% manage in excess of \$1 billion.

The research universe included 27 portfolio managers/chief investment officers, 14 research analysts, and seven traders.

RESPONDENTS



Note: ¹Based on 50 respondents. ²Based on 47 respondents. ³Based on 50 respondents.

*Includes pensions, endowments and foundations.

Source: Greenwich Associates 2018 Latin American Exchange-Traded Funds Study



www.greenwich.com | ContactUs@greenwich.com

Coalition Greenwich, a division of CRISIL, an S&P Global Company, is a leading global provider of strategic benchmarking, analytics and insights to the financial services industry.

We specialize in providing unique, high-value and actionable information to help our clients improve their business performance.

Our suite of analytics and insights encompass all key performance metrics and drivers: market share, revenue

performance, client relationship share and quality, operational excellence, return on equity, behavioral drivers, and industry evolution.

About CRISIL

CRISIL is a leading, agile and innovative global analytics company driven by its mission of making markets function better. It is majority owned by S&P Global Inc., a leading provider of transparent and independent ratings, benchmarks, analytics, and data to the capital and commodity markets worldwide.

CRISIL is India's foremost provider of ratings, data, research, analytics, and solutions with a strong record of growth, culture of innovation, and global footprint.

It has delivered independent opinions, actionable insights and efficient solutions to over 100,000 customers through businesses that operate from India, the U.S., the U.K., Argentina, Poland, China, Hong Kong, and Singapore.

For more information, visit www.crisil.com

Disclaimer and Copyright

This Document is prepared by Coalition Greenwich, which is a part of CRISIL Ltd, an S&P Global company. All rights reserved. This Document may contain analysis of commercial data relating to revenues, productivity and headcount of financial services organisations (together with any other commercial information set out in the Document). The Document may also include statements, estimates and projections with respect to the anticipated future performance of certain companies and as to the market for those companies' products and services.

The Document does not constitute (or purport to constitute) an accurate or complete representation of past or future activities of the businesses or companies considered in it but rather is designed to only highlight the trends. This Document is not (and does not purport to be) a comprehensive Document on the financial state of any business or company. The Document represents the views of Coalition Greenwich as on the date of the Document and Coalition Greenwich has no obligation to update or change it in the light of new or additional information or changed circumstances after submission of the Document.

This Document is not (and does not purport to be) a credit assessment or investment advice and should not form basis of any lending, investment or credit decision. This Document does not constitute nor form part of an offer or invitation to subscribe for, underwrite or purchase securities in any company. Nor should this Document, or any part of it, form the basis to be relied upon in any way in connection with any contract relating to any securities. The Document is not an investment analysis or research and is not subject to regulatory or legal obligations on the production of, or content of, investment analysis or research.

The data in this Document may reflect the views reported to Coalition Greenwich by the research participants. Interviewees may be asked about their use of and demand for financial products and services and about investment practices in relevant financial markets. Coalition Greenwich compiles the data received, conducts statistical analysis and reviews for presentation purposes to produce the final results.

THE DOCUMENT IS COMPILED FROM SOURCES COALITION GREENWICH BELIEVES TO BE RELIABLE. COALITION GREENWICH DISCLAIMS ALL REPRESENTATIONS OR WARRANTIES, EXPRESSED OR IMPLIED, WITH RESPECT TO

THIS DOCUMENT, INCLUDING AS TO THE VALIDITY, ACCURACY, REASONABLENESS OR COMPLETENESS OF THE INFORMATION, STATEMENTS, ASSESSMENTS, ESTIMATES AND PROJECTIONS, ANY WARRANTIES OF MERCHANTABILITY OR FITNESS FOR A PARTICULAR PURPOSE ARISING OUT OF THE USE OF ALL OR ANY OF THIS DOCUMENT. COALITION GREENWICH ACCEPTS NO LIABILITY WHATSOEVER FOR ANY DIRECT, INDIRECT OR CONSEQUENTIAL LOSS OR DAMAGE OF ANY KIND ARISING OUT OF THE USE OF ALL OR ANY OF THIS DOCUMENT.

Coalition Greenwich is a part of CRISIL Ltd, an S&P Global company. ©2024 CRISIL Ltd. All rights reserved.

greenwich.com

ContactUs@greenwich.com

Ph +1203.625.5038